

International School Moshi

P.O.Box 733
Moshi
Kilimanjaro
Tanzania

Tel: +255 27 2755004, 2755005
Fax: +255 27 2752877
E-mail: school@ismoshi.org

Web Site: <http://www.ismoshi.org>

Accredited by: Middle States Association of Colleges and Schools
Council for International Schools



founded 1969

Director: Robert Woods
Head of Campus: Keiron White
Diploma Coordinator: Patricia Hermes
College Counsellor: Beth Beveridge
Counsellor Email: bethb@ismoshi.net

CEEB Code: 643250
UCAS Code: 47512
IB Code: 00032

Grades: Pre-K - 12

School and Community

International School Moshi was founded forty years ago to provide an international boarding and day school serving the expatriate and local communities in northern Tanzania and throughout the East African region. The school is independently governed by a board comprised of representatives of the founding missionary organizations and parents. The main campus in Moshi is situated beneath the magnificent splendor of Mount Kilimanjaro and provides an education from pre-K (three year olds) to the demanding International Baccalaureate diploma program in the 12th grade. Our second campus is 50 miles away in the expanding town of Arusha and this accommodates students from pre-K up to 10th grade. Nearly one third of the student body are Tanzanians, mainly the children of local businessmen and employees of international organizations; expatriate students' parents are largely drawn from the development community, missionary organizations, and small family business backgrounds.

Student Body

Total student body (Moshi and Arusha)	410 students
High school enrollment (9 th -12 th grades)	140 students
Boarding enrollment	107 students
2009 Graduating class	35 students

Number of different nationalities	44
Percentage of US citizens	7 %
Percentage of Tanzanian citizens	30 %
Percentage of second-language English speakers	75 %

Faculty

Full-time	47 teachers
Part-time	15 teachers
Nationalities	20% Canadian, 17% USA, 17% British, 15% Tanzanian

School Year

ISM's school year consists of 180 teaching days from August to June. Until 2009 the year was divided into three terms with grades reported each term. From August 2009, the year is divided into four quarters. Grades are determined based on a variety of assessments. S4 and D1 (9th and 11th grade) student assessments in the final term include the results of school examinations. S5 and D2 (10th and 12th grade) students additionally received grades for IGCSE and IB Diploma examinations respectively in their final term.

Curriculum

The elementary schools follow the Primary Years Program of the International Baccalaureate Organization (IBO). From 2008 our high schools follow the Middle Years Program of the IBO. Prior to 2008 the S5 class (10th grade) followed a curriculum leading to the examinations of the International General Certificate of Secondary Education (IGCSE). In the final two years the majority of students undertake the Diploma program of the International Baccalaureate (IB) whilst others follow a High School Diploma program consisting of a mixture of IB and other courses.

Special Curricular Strengths

ISM was the first school in Africa to offer the International Baccalaureate Diploma program and has maintained a consistent record of academic excellence in the diploma as well as having many teachers involved in the development and examining of IB curricula. The school has a wide and varied CAS (Creativity, Action, Service) program with a strong emphasis on Community Service; 11th and 12th grade students are expected to commit a minimum of three hours per week to this program. In celebration of the superb environment in which we live based at the foot of snow-capped Mount Kilimanjaro, the school offers an extensive Outdoor Pursuits program including a significant number of mountain trips on Kilimanjaro and nearby Mount Meru. ISM is also one of the small number of schools worldwide offering all three International Baccalaureate programs.

Grading System

Until 2008, S4 and S5 students (9th/10th Grade) were graded according the IGCSE system using grades from A* and A thru G and U. Approximate equivalent US grades are shown below:

IGCSE Grade	US Equivalent
A*	A+
A, B	A
C, D	B
E	C
F, G	D
U	F

IB students are graded according to the IB system from 7 (excellent) thru 1 (very poor). Approximate equivalent US high school grades are shown below:

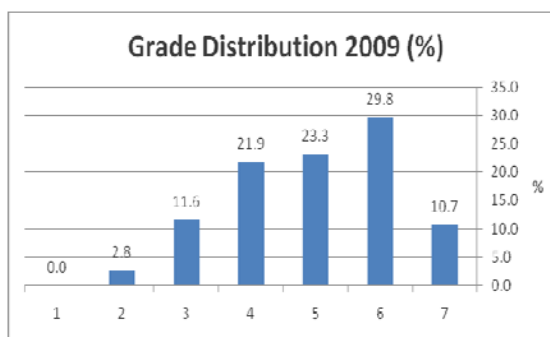
IB Grade	US Equivalent
7, 6	A
5	B+
4	B
3	C
2	C-
1	D

Due to the size of the senior class and the transient student population coming from a wide variety of educational and linguistic backgrounds, students are not usually ranked and GPA is not calculated.

Senior Class IB Diploma Results 2005-2009

IB Diploma Results 2005-2009

Number of diploma candidates	166
Successful candidates	141 (85%)
Those scoring 30 points + (good)	97 (58%)
Those scoring 35 points + (excellent)	38 (23%)



University Admissions

In the last 3 years, ISM graduates have attended the following colleges and universities:

USA:

Arizona
Arizona State
Bates College
Brown
Colorado College
Connecticut
Denison
East Carolina
Emory
Evergreen State
George Washington
Idaho
Lynn University
Minnesota
Minnesota State
New Mexico

Oregon

Savannah State
Southern Alabama
Vassar College
Washington

Canada:

Alberta
British Columbia
Carleton University
Concordia
Ottawa
Thompson Rivers
Toronto
Trent University
Waterloo

Britain:

Aston
Bath
Cardiff
Central Lancashire
Chelsea College of Art & Design
Exeter
Heriot-Watt
Hertfordshire
Huddersfield
Imperial College
Keele
Lancaster
Leeds Metropolitan
Leicester
Loughborough

Nottingham

Oxford Brookes
Plymouth
SOAS
Staffordshire
Sussex

Others:

Amsterdam
Bosnia American U
Erasmus University
Hong Kong UST
Jacobs U, Bremen
Maastricht
Monash University
Sydney U of Tech
Tumaini, Tanzania
Western Australia